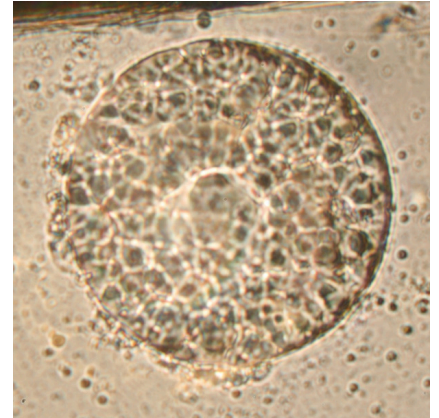




# JBL Punktol Plus 1500

Remedy for 1500 l to treat white spot disease

Suitable for:



- For treatment of white spot and other ectoparasites
- For the treatment of parasites on freshwater and marine fish and the partial treatment of aquatic invertebrates
- In case of re-infestation: repeat dosing because of the pathogen's life cycle. Pathogen detaches itself from fish after a few days and sinks to the bottom. Does not contain copper
- JBL Online Hospital: gives you access to identify fish diseases
- Contents: 1 pack Punktol Plus 1500, 50 ml. Suitable for max. 12500 l aquarium water. In case of repeated use for max. 1500 l aquarium water. Use: 1 drop/10 l aquarium water. Duration of treatment: for approx. 15 days every second day = 8 dosages

You may also be interested in

You can find a complete overview here: <https://www.jbl.de/qr/10066>



**JBL Denitrol**  
Bacteria starter for adding aquarium fish



**JBL FilterStart**  
Bacteria for the activation of filters



**JBL Acclimol**  
Water conditioner for acclimatisation





# JBL Punktol Plus 1500



## Product information

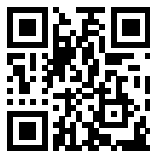
About 90 % of all fish diseases can be put down to a weakening of the fish's immune system. This means the application of remedies can fight the pathogen but doesn't generally eliminate the cause. It is therefore very important to determine the cause.

As soon as the first signs of disease become noticeable IMMEDIATE action is required. In most cases people wait too long. Example: as soon as the smallest "spot" becomes visible, treatment needs to start. Waiting too long leads to that one little spot (white spot disease) coming off the fish's skin, falling to the bottom and, after a capsule formation, releasing 1000 new spot pathogens, which increase the likelihood of infection spreading to all the other aquarium inhabitants.

This is a parasite from the group of the Ciliates, which can be killed off quickly and safely with JBL Punktol Plus 125 or JBL Punktol Plus 250 (+ JBL Punktol Plus 1500). No medication can kill the parasite directly off the fish because the parasite is "protected" by the fish's mucous membrane.

This parasite has a life cycle notable for having several stages during which it cannot be killed. Only during a free floating "swarm out" phase is a successful elimination possible. We therefore recommend you raise the water temperature by 3 °C (do not raise the water temperature over 30 °C). This causes the life cycle to be accelerated, which in turn considerably improves the chances of catching the parasite in a vulnerable swarm out phase!

Prior to use, any activated carbon needs to be removed from the filter, UV-C appliances and CO2 fertilisation should be switched off and, in salt water, skimmers and ozonisers are also to be switched off. 50 % of the water should be changed prior to application. The tank should be aerated with a diaphragm pump with an air stone during the treatment. JBL Punktol Plus should generally be added in the morning and the animals observed.

Further information	
FAQ	✓
Blog	✓
Press	✓
Laboratory/calculator	✗
Worth reading	✓
Spare parts	✗
Video	✓
GarantiePlus	✗
Instructions	✓
QR code	





# JBL Punktol Plus 1500

Food type	-
Sub product type	remedies
Dosing	50 ml solution as a supplement for 12,500 l aquarium water






# JBL Punktol Plus 1500



## Safety information

Further safety information	
Safety instructions	✓
QR code	
Notes	*For questions on risks and side-effects please read the package insert and ask your veterinary or pharmacist.
Note	For corals and other invertebrates in marine water it can lead to long-term damage. (caution for Punktol ultra forte)

