
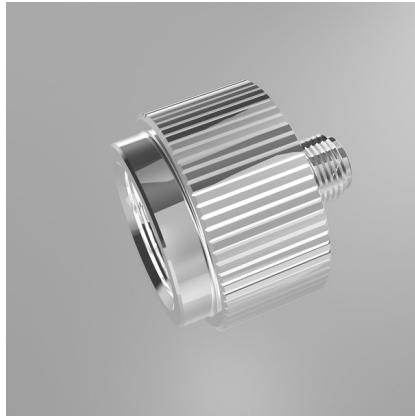




JBL PROFLORA Adapt u-m

Conversion adapter for the change over from disposable to refillable cylinder system

Suitable for: 

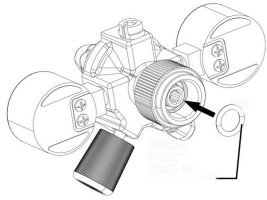


- Problem-free change over from disposable to refillable cylinders
- Quick and easy installation: screw adapter onto pressure reducer, finished!
- The conversion can be reversed at any time.
- Suitable for CO2 pressure reducer JBL u001
- Package contents: adapter for change over from a disposable to a refillable cylinder system, Pro Flora u-m

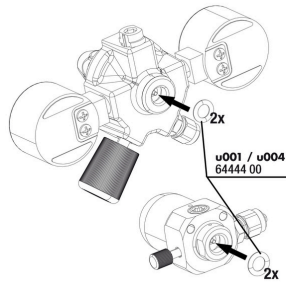


JBL PROFLORA Adapt u-m

Spare parts



JBL ProFlora "m" O-ring



JBL ProFlora "u" O-ring seal



JBL PROFLORA Adapt u-m




Product information

Ideal nutrition for plants

Carbon dioxide serves as the main nutrient for plants and thus promotes their ideal growth. Plants use CO₂ for photosynthesis and thus supply the water with essential oxygen. They prevent algae growth, remove pollutants, offer hiding places and reduce pathogens. The correct amount of CO₂ varies from aquarium to aquarium and depends on the volume, the water movement and the planting of the aquarium. With the JBL pressure reducer a precise dosage of CO₂ is possible.

Easy to install

By using a size 6 Allen key (not included) the adapter can be screwed into the JBL pressure reducer. The conversion can be reversed at any time.

Further information	
FAQ	✓
Blog	✓
Press	✓
Laboratory/calculator	✗
Worth reading	✓
Spare parts	✓
Video	✓
GarantiePlus	✗
Instructions	✓
QR code	





JBL PROFLORA Adapt u-m

Food type	-
Sub product type	-
Dosing	-

