
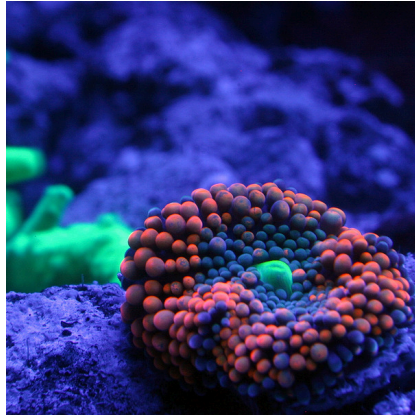




JBL SOLAR OCEAN BLUE T5 ULTRA, 45-80 W

Blue T5 daylight tube for marine aquariums

Suitable for: 



- Special blue fluorescent tube to promote the natural colouring of corals, molluscs and other invertebrates in marine aquariums
- Easy to install: insert fluorescent T5 tube socket into the fixture and turn until the tube locks into place
- Ideal colour temperature for corals, molluscs and invertebrates: reproduces the impression of deep oceans. Emphasizes and promotes natural fluorescence.
- Energy efficiency class A or B can only be achieved with bright tubes. Coloured tubes only reach energy efficiency class C
- The colour rendering is guaranteed for 2 years. Includes reminder label for replacement



JBL SOLAR OCEAN BLUE T5 ULTRA, 45-80 W

Accessories



**JBL SOLAR REFLECT
Clip Set**
Holder for fluorescent tubes



JBL Clips T5/T8 (Metal)
Metal holder für fluorescent
tubes



**JBL SOLAR Reflect T5/
T8 - 895-1500 mm**
Reflector panel for fluorescent
tube





JBL SOLAR OCEAN BLUE T5 ULTRA, 45-80 W



Product information

Light as energy source

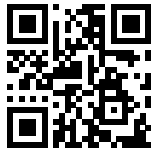
Most corals in aquariums need sufficient light. They often feed from the metabolic products of the algae, which live in their tissue. Corals which don't feed photosynthetically prefer dark places and need to be fed with phyto and zooplankton (JBL KorallFluid, JBL PlanktonPur). To ensure ideal growth it is important to know and to reproduce the light requirements of the individual corals in the marine tank.

Easy to install

Insert the fluorescent T5 tube socket into the fixture and turn until the tube locks into place.

Actinic light:

The JBL SOLAR OceanBlue tube generates a strong blue light which is also referred to as actinic light. It is a particularly effective short-wave light from the blue and ultraviolet spectral range. When this tube alone is switched on it creates the glow of the corals and the desired moonlight effect. The actinic spectral range of this tube accentuates the fluorescence of corals and clams (e.g. Tridacna). The JBL tube doesn't generate a pure actinic spectrum, but has spectral components added which are especially suitable for the light in marine aquariums. It is NOT useful to illuminate marine aquariums with actinic light alone since the corals in our care don't originate from great depths but mostly from depths up to 20 m and thus receive strong sunlight. The combination of JBL SOLAR MarinDay and JBL SOLAR OceanBlue is perfect. If you only install one tube you should choose the JBL SOLAR MarinDay.

Further information	
FAQ	✓
Blog	✓
Press	✓
Laboratory/calculator	✗
Worth reading	✓
Spare parts	✗
Video	✓
GarantiePlus	✓
Instructions	✗
QR code	





JBL SOLAR OCEAN BLUE T5 ULTRA, 45-80 W

Product details

Article data				
Product name	JBL SOLAR OCEAN BLUE T5 ULTRA, 898 mm/45 W	JBL SOLAR OCEAN BLUE T5 ULTRA, 1047 mm/54 W	JBL SOLAR OCEAN BLUE T5 ULTRA, 1150 mm/54W	JBL SOLAR OCEAN BLUE T5 ULTRA, 1200 mm/54 W
Art. No.	6188500	6188600	6188700	6188800
EAN number	4014162618856	4014162618863	4014162618870	4014162618887
EAN as barcode				
Performance	45 W	54 W	54 W	54 W
Length	895 mm	1047 mm	1150 mm	1200 mm
Expiry months	-	-	-	-
RRP incl. VAT	29,95 €	30,50 €	31,04 €	32,13 €
Base price	-	-	-	-
Nominal filling quantity	-	-	-	-
Base quantity	1	1	1	1
Gross weight	225 g	245 g	265 g	269 g
Net weight	85 g	90 g	110 g	114 g
Weight change	1000	1000	1000	1000

Disposal				
Product name	JBL SOLAR OCEAN BLUE T5 ULTRA, 898 mm/45 W	JBL SOLAR OCEAN BLUE T5 ULTRA, 1047 mm/54 W	JBL SOLAR OCEAN BLUE T5 ULTRA, 1150 mm/54W	JBL SOLAR OCEAN BLUE T5 ULTRA, 1200 mm/54 W
Art. No.	6188500	6188600	6188700	6188800
Green dot	✓	✓	✓	✓
Group electronic waste	Gas discharge lamps that can be used in private households	Gas discharge lamps that can be used in private households	Gas discharge lamps that can be used in private households	Gas discharge lamps that can be used in private households
Disposal weight	85 g	99 g	155 g	114 g
Battery type	-	-	-	-
Battery return	-	-	-	-
Battery rechargeable	-	-	-	-
Disposal weight battery	-	-	-	-
Non-returnable glass	-	-	-	-
PPK	140 g	155 g	155 g	155 g
Plastic small	-	-	-	-
Plastic large	-	-	-	-
Disposal weight metal	0 g	0 g	0 g	0 g

Features				
Product name	JBL SOLAR OCEAN BLUE T5 ULTRA, 898 mm/45 W	JBL SOLAR OCEAN BLUE T5 ULTRA, 1047 mm/54 W	JBL SOLAR OCEAN BLUE T5 ULTRA, 1150 mm/54W	JBL SOLAR OCEAN BLUE T5 ULTRA, 1200 mm/54 W
Art. No.	6188500	6188600	6188700	6188800
Animal species	Corals, Crayfish, Dwarf shrimps, Gobies, Juvenile fish, Mussels, Snails	Corals, Crayfish, Dwarf shrimps, Gobies, Juvenile fish, Mussels, Snails	Corals, Crayfish, Dwarf shrimps, Gobies, Juvenile fish, Mussels, Snails	Corals, Crayfish, Dwarf shrimps, Gobies, Juvenile fish, Mussels, Snails
Animal size	For all animal sizes	For all animal sizes	For all animal sizes	For all animal sizes
Animal age group	All aquarium fish	All aquarium fish	All aquarium fish	All aquarium fish





Features				
Volume of habitat	100 cm	130 cm	130 cm	130 cm
Material	Glass, metal, inert gas	Glass, metal, inert gas	Glass, metal, inert gas	Glass, metal, inert gas
Food type	-	-	-	-
Colour	white	white	white	white
Dosage	-	-	-	-
Transport conditions	-	-	-	-





JBL SOLAR OCEAN BLUE T5 ULTRA, 45-80 W

Electronic label / illuminant				
Product name	JBL SOLAR OCEAN BLUE T5 ULTRA, 898 mm/45 W	JBL SOLAR OCEAN BLUE T5 ULTRA, 1047 mm/54 W	JBL SOLAR OCEAN BLUE T5 ULTRA, 1150 mm/54W	JBL SOLAR OCEAN BLUE T5 ULTRA, 1200 mm/54 W
Art. No.	6188500	6188600	6188700	6188800
Ambient temperature	22 °C	22 °C	22 °C	22 °C
Start time	1 s	1 s	1 s	1 s
Mercury	✓	✓	✓	✓
Tube length	1149 mm	1047 mm	1149 mm	1200 mm
Service life	20000 h	20000 h	20000 h	20000 h
Lumen	990 lm	1000 lm	990 lm	1100 lm
CRI value	-	-	-	-
Dimmable	✓	✓	✓	✓
Switching cycles	10000	10000	10000	10000
PAR value	-	-	-	-
Energy efficiency class	-	-	-	-
UV-A	-	-	-	-
UV-B	-	-	-	-
UV-C	-	-	-	-
Colour temperature	not known	not known	not known	not known
Base designation	T5	T5	T5	T5

Technical data				
Product name	JBL SOLAR OCEAN BLUE T5 ULTRA, 898 mm/45 W	JBL SOLAR OCEAN BLUE T5 ULTRA, 1047 mm/54 W	JBL SOLAR OCEAN BLUE T5 ULTRA, 1150 mm/54W	JBL SOLAR OCEAN BLUE T5 ULTRA, 1200 mm/54 W
Art. No.	6188500	6188600	6188700	6188800
Range in litres	-	-	-	-
Range from - to	-	-	-	-
Range in days	-	-	-	-
Range tank length	-	-	-	-
Output in watts	-	-	-	-
Output per hour	-	-	-	-
Output per day	-	-	-	-
Height	-	-	-	-
Length	-	-	-	-
Width	-	-	-	-
Diameter	-	-	-	-
Voltage	-	-	-	-
For	-	-	-	-
T8 26mm (watt)	-	-	-	-
T5 16mm (watt)	-	-	-	-
Size	-	-	-	-
Content for	-	-	-	-
Filter container volume	-	-	-	-
Volume filter media	-	-	-	-
Hose connections pressure/out	-	-	-	-





Technical data				
Hose connections suction/in	-	-	-	-
Delivery head	-	-	-	-





JBL SOLAR OCEAN BLUE T5 ULTRA, 45-80 W

Food type	-
Sub product type	lamps
Dosing	-





JBL SOLAR OCEAN BLUE T5 ULTRA, 45-80 W

Safety information

Further safety information	
Warnings	No EEL label required. Exemption according to (EU) 2019/2015 Annex IV 3. g) coral-zooxanthellae symbiosis. Lampen zur Korallen-Zooxanthellen-Symbiose



Additional information for the specialist trade sector

Article data				
Product name	JBL SOLAR OCEAN BLUE T5 ULTRA, 898 mm/45 W	JBL SOLAR OCEAN BLUE T5 ULTRA, 1047 mm/54 W	JBL SOLAR OCEAN BLUE T5 ULTRA, 1150 mm/54W	JBL SOLAR OCEAN BLUE T5 ULTRA, 1200 mm/54 W
Art. No.	6188500	6188600	6188700	6188800
VAT	19%	19%	19%	19%
Sales unit (SU)	4	4	4	4
Volume packaging	1.6l	2l	2l	2l
Dimensions (l/w/h)	37 mm/44 mm/978 mm	37 mm/44 mm/1276 mm	37 mm/44 mm/1276 mm	37 mm/44 mm/1276 mm
Layer	36	528	528	528
Pallet	540	528	528	528
Category of products	1	1	1	1
Customs tariff	85393110	85393110	85393110	85393110
Country of origin	DE	DE	DE	DE
Type of packaging	Faltschachtel/Karton	Faltschachtel/Karton	Faltschachtel/Karton	Faltschachtel/Karton

PU 1 data				
Product name	JBL SOLAR OCEAN BLUE T5 ULTRA, 898 mm/45 W	JBL SOLAR OCEAN BLUE T5 ULTRA, 1047 mm/54 W	JBL SOLAR OCEAN BLUE T5 ULTRA, 1150 mm/54W	JBL SOLAR OCEAN BLUE T5 ULTRA, 1200 mm/54 W
Art. No.	6188500	6188600	6188700	6188800
PU 1 material	cardboard gr	cardboard gr	cardboard gr	cardboard gr
PU 1 weight	223 g	223 g	223 g	223 g
PU 1 length	82 mm	82 mm	82 mm	82 mm
PU 1 width/depth	69 mm	69 mm	69 mm	69 mm
PU 1 height	979 mm	1285 mm	1285 mm	1285 mm

PU 2 data				
Product name	JBL SOLAR OCEAN BLUE T5 ULTRA, 898 mm/45 W	JBL SOLAR OCEAN BLUE T5 ULTRA, 1047 mm/54 W	JBL SOLAR OCEAN BLUE T5 ULTRA, 1150 mm/54W	JBL SOLAR OCEAN BLUE T5 ULTRA, 1200 mm/54 W
Art. No.	6188500	6188600	6188700	6188800
PU 2 material	None	None	None	None
PU 2 weight	-	-	-	-
PU 2 length	-	-	82 mm	-
PU 2 width/depth	-	-	69 mm	-
PU 2 height	-	-	1285 mm	-

Trade data				
Product name	JBL SOLAR OCEAN BLUE T5 ULTRA, 898 mm/45 W	JBL SOLAR OCEAN BLUE T5 ULTRA, 1047 mm/54 W	JBL SOLAR OCEAN BLUE T5 ULTRA, 1150 mm/54W	JBL SOLAR OCEAN BLUE T5 ULTRA, 1200 mm/54 W
Art. No.	6188500	6188600	6188700	6188800
Till receipt text	Ocean Blue 45W	Ocean Blue 54W	Ocean Blue 54W	Ocean Blue 54W
Shelf placement	-	-	-	-

