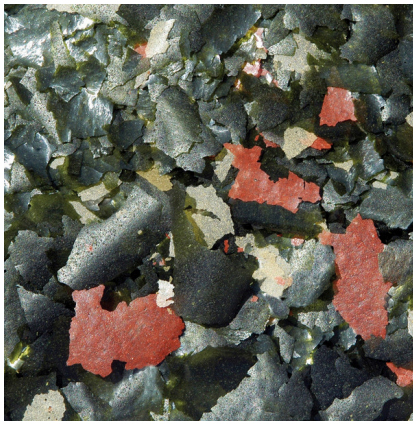




# JBL NovoMalawi

Main food flakes for algae-eating cichlids

Suitable for: 



- Complete nutrition and ideal growth for algae-eating (grazing) Lake Malawi and Lake Tanganyika cichlids
- The right food for the specialised growth eaters of Lake Malawi and Lake Tanganyika from 5-20 cm in size. The growth (and this food) consists of algae and microorganisms living in it
- No water clouding: reduced algae growth thanks to balanced phosphate content, better water quality due to better digestibility of the food, which reduces fish excrement
- Fish choose JBL food: 98.5% of all fish species ate the JBL food immediately during research expeditions in freshwaters. No processing of cheap fish meal, fish meat from fish fillet production for humans is used
- Contents: main food flakes for aquarium fish. Use within 4 months after opening. High-quality packaging with foil seal means it can be stored for 3 years unopened

 You may also be interested in

You can find a complete overview here: <https://www.jbl.de/qr/30010>



## JBL NovoVert

Main food flakes for plant-eating fish



## JBL Spirulina

Premium main food for algae-eating aquarium fish





# JBL NovoMalawi

## Accessories



**JBL Atvitol**  
Multivitamin drops for  
aquarium fish



**JBL NovoStation**  
Floating feeding ring with water  
level adaption



**JBL AutoFood BLACK**  
Black automatic feeder for  
aquarium fish



**JBL AutoFood WHITE**  
White automatic feeder for  
aquarium fish



# JBL NovoMalawi



## Product information

In the Rift Valley lakes of East Africa (Lakes Malawi and Tanganyika), many cichlids have specialised in grazing the algae growth from the rocks for the microorganisms living in them (growth eaters). Their dentition is adapted to this and is called a rasping mouth. For these growth eaters the food needs the essential components mentioned to ensure healthy digestion and to ensure strong growth with perfect colours.

JBL NovoTanganjika has been developed for the predatory species of the two lakes. If both groups are kept together in ONE aquarium, it is essential you offer both types of food. Each feeding type will then receive the right food.

Typical growth eaters (mbuna) from Lake Malawi: Pseudotropheus, Chindongo, Cynotilapia, Maylandia  
Typical growth eaters from Lake Tanganyika: Tropheus, Petrochromis

Other good reasons to use JBL fish food:

The use of pure fish protein without cheap fish meal.

Optimal protein/fat ratio.

Mainly proteins from water animals.

Reduction of algae growth and optimal fish growth thanks to adapted phosphate content.


Impressive acceptance on the part of fish: research expeditions with fish feeding trials in the wild.

Very slight vitamin loss thanks to airtight sealed packaging.

### Feeding recommendation

Feed 2 – 3 times a day, as much as can be eaten within a few minutes. Young, still growing fish more often.

Unopened the food tins can be kept for 3 years, after opening use up within 4 months, since valuable vitamins will deteriorate. Choose the size of the tin (100 ml, 250 ml, 1 l, 5.5 l, 12.5 l) in accordance with the monthly consumption stated above and the number of the fish in the aquarium. Supplementary food and treats to complement complete food are available separately.

Further information	
FAQ	✓
Blog	✓
Press	✓
Laboratory/calculator	✗
Worth reading	✓
Spare parts	✗
Video	✓
GarantiePlus	✗
Instructions	✓
QR code	





# JBL NovoMalawi



## Product details

Article data	
Product name	JBL NovoMalawi 5,5 l
Art. No.	3001200
EAN number	4014162300126
EAN as barcode	
Weight	860 g
Size	5500 ml
Expiry months	36
RRP incl. VAT	50,78 €
Base price	59,05 €
Nominal filling quantity	860 g
Base quantity	1 kg
Gross weight	1060 g
Net weight	860 g
Weight change	1000

Disposal	
Product name	JBL NovoMalawi 5,5 l
Art. No.	3001200
Green dot	✓
Group electronic waste	-
Disposal weight	-
Battery type	-
Battery return	-
Battery rechargeable	-
Disposal weight battery	-
Non-returnable glass	-
PPK	-
Plastic small	-
Plastic large	200 g
Disposal weight metal	0 g

Features	
Product name	JBL NovoMalawi 5,5 l
Art. No.	3001200
Animal species	Cichlids (South America)
Animal size	5 - 20 cm
Animal age group	Small and medium-sized aquarium fish
Volume of habitat	For all aquariums
Material	You will find details of the materials used under Details & Composition



Features	
Food type	food flakes
Colour	green / red / yellow
Dosage	Feed 1 – 2 times a day, as much as can be eaten within a few minutes. Young, growing fish 3 – 4 times a day in the same way
Transport conditions	-





# JBL NovoMalawi

Electronic label / illuminant	
Product name	JBL NovoMalawi 5,5 l
Art. No.	3001200
Ambient temperature	-
Start time	-
Mercury	-
Tube length	-
Service life	-
Lumen	-
CRI value	-
Dimmable	-
Switching cycles	-
PAR value	-
Energy efficiency class	-
UV-A	-
UV-B	-
UV-C	-
Colour temperature	-
Base designation	-

Technical data	
Product name	JBL NovoMalawi 5,5 l
Art. No.	3001200
Range in litres	-
Range from - to	-
Range in days	-
Range tank length	-
Output in watts	-
Output per hour	-
Output per day	-
Height	195 mm
Length	225 mm
Width	225 mm
Diameter	225 mm
Voltage	-
For	-
T8 26mm (watt)	-
T5 16mm (watt)	-
Size	-
Content for	-
Filter container volume	-
Volume filter media	-
Hose connections pressure/out	-
Hose connections suction/in	-
Delivery head	-

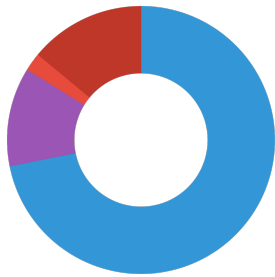




# JBL NovoMalawi

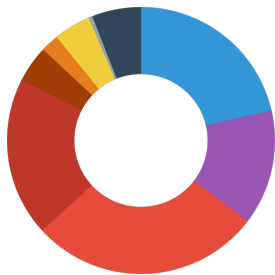
Food type	food flakes
Sub product type	complete food for ornamental fish
Dosing	Feed 1 - 2 times a day, as much as can be eaten within a few minutes. Young, growing fish 3 - 4 times a day in the same way

## Analytical components



Crude protein	36 %
Fat content	6 %
Crude fibre	1.1 %
Crude ash	7 %

## Composition



Vegetable by-products
Fish and fish by-products
Cereals
Algae
Vegetables
Yeast
Vegetable proteins
Eggs and egg products
Molluscs and crustaceans

## Additives

<b>Colourings</b>
Colorant Red E124
Colorant Iron Oxide Red E172
Colorant Indigotine Blue E132
Astaxanthin E161j food colouring

<b>Antioxidants</b>
E 306 (natural vitamin E extracts)

<b>Vitamins, provitamins and other chemically defined substances having a similar effect (per 1000 g)</b>	
Vitamin A	20000 I. E.
Vitamin D <sub>3</sub>	2000 I. E.
Vitamin E	250 mg
Vitamin C(stable)	300 mg





## Additional information for the specialist trade sector

Article data	
Product name	JBL NovoMalawi 5,5 l
Art. No.	3001200
VAT	7%
Sales unit (SU)	1
Volume packaging	9.87l
Dimensions (l/w/h)	225 mm/225 mm/195 mm
Layer	0
Pallet	0
Category of products	1
Customs tariff	23099041
Country of origin	DE
Type of packaging	Eimer

PU 1 data	
Product name	JBL NovoMalawi 5,5 l
Art. No.	3001200
PU 1 material	None
PU 1 weight	-
PU 1 length	-
PU 1 width/depth	-
PU 1 height	-

PU 2 data	
Product name	JBL NovoMalawi 5,5 l
Art. No.	3001200
PU 2 material	None
PU 2 weight	-
PU 2 length	-
PU 2 width/depth	-
PU 2 height	-

Trade data	
Product name	JBL NovoMalawi 5,5 l
Art. No.	3001200
Till receipt text	NovoMalawi 5,5l
Shelf placement	-

