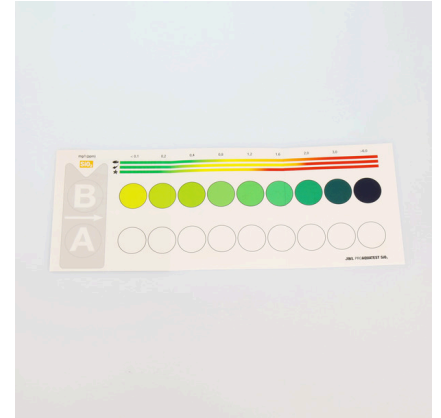




JBL PROAQUATEST SiO₂ Silicate

Quick test to determine the silicate content

Suitable for:



- Silicates (silicic acid) are the cause of unsightly diatoms. With this test you determine the silicate content for diatom control in freshwater and marine aquariums
- Laboratory comparator system to compensate the inherent water colour: fill glass vials with sample water, add reagents to one vial, place vials in holder, read values off colour chart
- Use: when setting up a new aquarium, for checking tap water and during diatom problems
- You will find detailed information and troubleshooting tips about water analysis on the JBL website in Essentials/Aquarium
- Package contents: 1 silicate test for approx. 50 measurements, incl. 2 reagents, 2 glass vials with screw caps, dosing spoon, syringe, comparator block and colour scale. Reagent refill separately available

You may also be interested in

You can find a complete overview here: <https://www.jbl.de/qr/24118>



JBL PROAQUATEST LAB
Test case with 13 water tests for freshwater analysis



JBL PROAQUATEST LAB PROSCAPE
Test case for water analysis in plant aquariums



JBL PROAQUATEST LAB Marin
Professional test case for marine water analysis





JBL PROAQUATEST SiO₂ Silicate

 Spare parts



JBL component set for water tests



JBL PROAQUATEST range colour charts





JBL PROAQUATEST SiO₂ Silicate

Product information

Healthy aquariums with conditions close to nature

The right water values are dependent on the fish stock and the plants in the aquarium. Even if the water looks clear it can be contaminated. With bad values diseases or algae can appear in the aquarium. To maintain a healthy aquarium with conditions close to nature it is important to check and adapt the water values regularly.

For each water analysis JBL provides water tests in the form of rapid tests or colour change tests. These determine a certain value or several values in one go. With these water tests you can recognise algae problems and negative nitrate, nitrite, potassium, magnesium values etc.

Why test?

Silicon is one of the most common elements in the world. As a result of the weathering of silicate rocks, silicon is washed into surface and ground water in the form of silicate. Depending on the composition of the rocks in a particular area, the mains water will contain varying amounts of dissolved silicate. The significance of silicon for aquariums and garden ponds is as a nutrient for diatoms, some aquatic plants, siliceous sponges and many other invertebrates.

JBL Online Laboratory

Regular monitoring for a healthy aquarium with conditions close to nature. Enter your water values into the JBL Online Laboratory and get an in-depth analysis of your values within seconds.

Recommended silicate values:

Freshwater aquarium (community aquarium): 0-2.0 mg/l

Lake Malawi/Lake Tanganyika aquarium: the silicate content is not relevant here because grazing fish species like eating diatoms

Plant aquarium with few fish (aquascaping): 0-2.0 mg/l

Marine water Aquarium: 0-1.0 mg/l

Pond: 0-2.0 mg/l

Further information	
FAQ	✓
Blog	✓
Press	✓
Laboratory/calculator	✗
Worth reading	✓
Spare parts	✓
Video	✓
GarantiePlus	✗
Instructions	✓
QR code	





JBL PROAQUATEST SiO₂ Silicate

Product details

Article data		
Product name	JBL PROAQUATEST SiO ₂ Silicate	JBL PROAQUATEST SiO ₂ REFILL
Art. No.	2411800	2411900
EAN number	4014162241184	4014162241191
EAN as barcode		
For	50 Tests	Refill
-	-	-
Expiry months	36	36
RRP incl. VAT	25,47 €	7,99 €
Base price	-	-
Nominal filling quantity	-	-
Base quantity	1	1
Gross weight	193 g	74.5 g
Net weight	132 g	33 g
Weight change	-	-

Disposal		
Product name	JBL PROAQUATEST SiO ₂ Silicate	JBL PROAQUATEST SiO ₂ REFILL
Art. No.	2411800	2411900
Green dot	✓	✓
Group electronic waste	-	-
Disposal weight	-	-
Battery type	-	-
Battery return	-	-
Battery rechargeable	-	-
Disposal weight battery	-	-
Non-returnable glass	14 g	14 g
PPK	27 g	7.5 g
Plastic small	20 g	20 g
Plastic large	-	-
Disposal weight metal	0 g	0 g

Features		
Product name	JBL PROAQUATEST SiO ₂ Silicate	JBL PROAQUATEST SiO ₂ REFILL
Art. No.	2411800	2411900





Features		
Animal species	Armored catfish, Arowana, Axolotl, Barbels, Bettas, Bichirs/ reedfish, Blowfish, Catfish, Cichlids (South America), Clawed frogs, Clawed shrimps, Corals, Crayfish, Crustaceans, Danions, Discus, Dwarf crayfish, Dwarf shrimps, Flowerhorn, Gill maggots, Gobies, Goldfish, Gouramis, Guppy, Juvenile fish, Killifish, Livebearers, Loaches, Mussels, Newts, Panchaxes, Rainbowfish, Snails, Spiny eels, Terrapins, Tetra, Tropical terrapins, Veiltails, blood parrot cichlids, freshwater butterflyfish, turtle	Armored catfish, Arowana, Axolotl, Barbels, Bettas, Bichirs/ reedfish, Blowfish, Catfish, Cichlids (South America), Clawed frogs, Clawed shrimps, Corals, Crayfish, Crustaceans, Danions, Discus, Dwarf crayfish, Dwarf shrimps, Flowerhorn, Gill maggots, Gobies, Goldfish, Gouramis, Guppy, Juvenile fish, Killifish, Livebearers, Loaches, Mussels, Newts, Panchaxes, Rainbowfish, Snails, Spiny eels, Terrapins, Tetra, Tropical terrapins, Veiltails, blood parrot cichlids, freshwater butterflyfish, turtle
Animal size	For all animal sizes	For all animal sizes
Animal age group	All aquarium fish	All aquarium fish
Volume of habitat	-	-
Material	Reagent(s) in plastic bottle(s) and/ or glass bottle(s) + plastic and/or glass accessories. REFILL: reagent (s) without accessories.	Reagent(s) in plastic bottle(s) and/ or glass bottle(s) + plastic and/or glass accessories. REFILL: reagent (s) without accessories.
Food type	-	-
Colour	white / transparent / black	white / transparent / black
Dosage	See instructions	See instructions
Transport conditions	-	-



JBL PROAQUATEST SiO₂ Silicate

Electronic label / illuminant		
Product name	JBL PROAQUATEST SiO ₂ Silicate	JBL PROAQUATEST SiO ₂ REFILL
Art. No.	2411800	2411900
Ambient temperature	-	-
Start time	-	-
Mercury	-	-
Tube length	-	-
Service life	-	-
Lumen	-	-
CRI value	-	-
Dimmable	-	-
Switching cycles	-	-
PAR value	-	-
Energy efficiency class	-	-
UV-A	-	-
UV-B	-	-
UV-C	-	-
Colour temperature	-	-
Base designation	-	-

Technical data		
Product name	JBL PROAQUATEST SiO ₂ Silicate	JBL PROAQUATEST SiO ₂ REFILL
Art. No.	2411800	2411900
Range in litres	-	-
Range from - to	-	-
Range in days	-	-
Range tank length	-	-
Output in watts	-	-
Output per hour	-	-
Output per day	-	-
Height	175 mm	64 mm
Length	106 mm	72 mm
Width	43 mm	24 mm
Diameter	-	-
Voltage	-	-
For	-	-
T8 26mm (watt)	-	-
T5 16mm (watt)	-	-
Size	-	-
Content for	-	-
Filter container volume	-	-
Volume filter media	-	-
Hose connections pressure/out	-	-
Hose connections suction/in	-	-
Delivery head	-	-





JBL PROAQUATEST SiO₂ Silicate

Food type	-
Sub product type	-
Dosing	See instructions





JBL PROAQUATEST SiO2 Silicate

Safety information

JBL SiO2 1 - safety information in accordance with GHS	
Signal word	Danger
Hazard symbol	
Risk phrase	H314: Causes severe skin burns and eye damage. H318: Causes serious eye damage.
safety note	P101: If medical advice is needed, have product container or label at hand. P102: Keep out of reach of children. P303+P361+P353: IF ON SKIN (or hair): Take off immediately all contaminated clothing. Rinse skin with water [or shower]. P305+P351+P338: IF IN EYES: Rinse cautiously with water for several minutes. Remove contact lenses, if present and easy to do. Continue rinsing. P501a: Dispose of contents/container in accordance with local regulations.
Hazard-determining component	7664-93-9: sulphuric acid

JBL SiO2 2 - safety information in accordance with GHS	
Signal word	Danger
Hazard symbol	
Risk phrase	H314: Causes severe skin burns and eye damage. H318: Causes serious eye damage.
safety note	P101: If medical advice is needed, have product container or label at hand. P102: Keep out of reach of children. P303+P361+P353: IF ON SKIN (or hair): Take off immediately all contaminated clothing. Rinse skin with water [or shower]. P305+P351+P338: IF IN EYES: Rinse cautiously with water for several minutes. Remove contact lenses, if present and easy to do. Continue rinsing.
Hazard-determining component	87-69-4: (+)-tartaric acid

Further safety information	
Safety instructions	✓
QR code	





Additional information for the specialist trade sector

Article data		
Product name	JBL PROAQUATEST SiO2 Silicate	JBL PROAQUATEST SiO2 REFILL
Art. No.	2411800	2411900
VAT	21%	21%
Sales unit (SU)	3	1
Volume packaging	0.8l	0.57l
Dimensions (l/w/h)	43 mm/106 mm/175 mm	30 mm/110 mm/175 mm
Layer	240	800
Pallet	720	2400
Category of products	1	1
Customs tariff	38221100	38221100
Country of origin	DE	DE
Type of packaging	Faltschachtel/Karton	Skin / blister card packaging

PU 1 data		
Product name	JBL PROAQUATEST SiO2 Silicate	JBL PROAQUATEST SiO2 REFILL
Art. No.	2411800	2411900
PU 1 material	film gr	cardboard gr
PU 1 weight	3.5 g	660 g
PU 1 length	106 mm	580 mm
PU 1 width/depth	130 mm	390 mm
PU 1 height	180 mm	310 mm

PU 2 data		
Product name	JBL PROAQUATEST SiO2 Silicate	JBL PROAQUATEST SiO2 REFILL
Art. No.	2411800	2411900
PU 2 material	cardboard gr	None
PU 2 weight	540 g	-
PU 2 length	400 mm	-
PU 2 width/depth	400 mm	-
PU 2 height	350 mm	-

Trade data		
Product name	JBL PROAQUATEST SiO2 Silicate	JBL PROAQUATEST SiO2 REFILL
Art. No.	2411800	2411900
Till receipt text	Test SiO2	Refill SiO2
Shelf placement	Test shelf, water treatment troubleshooting	Test shelf, water treatment troubleshooting