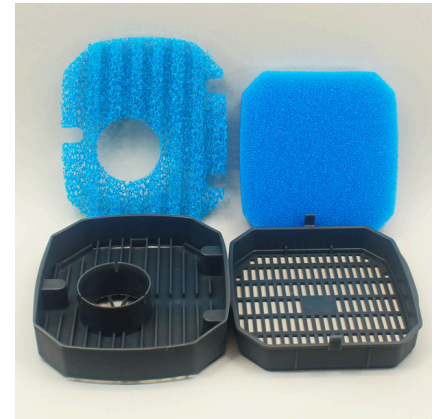
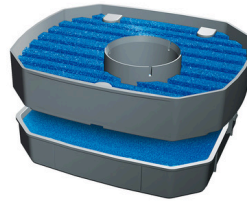




JBL CRISTALPROFI COMBIFILTER Basket II

filter basket replace. kit f. CristalProfi ext. filter

Suitable for:



- Optimised top filter basket with 100% more pre-filter surface including filter material
- Remove previous filter basket and insert new filter basket
- Optimises pre-filtering with JBL CristalProfi e 401, 701, 901, 1501 and 1901, which then are technically identical with JBL 402, 702 etc.
- Cleverly designed two-part filter basket: lower removable part contains post-filtering with 35 ppi (fine). Upper filter basket contains one-piece pre-filter mat with 100 % more surface and 15 ppi pore size
- Package contents: 2-part filter basket (separable through clip) with fine filter mat and coarse filter mat



JBL CRISTALPROFI COMBIFILTER Basket II



Product information

One of the advantages of the JBL CristalProfi external filter is the inner structure with the top mounted pre-filters which are easily accessible and thus easy and fast to clean.

Pre-filters are there to catch the coarse dirt which is sucked into the filter, so that it doesn't clog the underlying filter material. This filter basket has been designed to prevent the worst case scenario of coarse waste clogging the pre-filters, which can happen very fast. It contains one large one-piece pre-filter mat with at least the double surface of its predecessors (2 small externally arranged pre-filter mats).


This way the pre-filter doesn't clog as quickly and the high filter performance of the external filter is maintained.

Cleaning of plastics:

For many months it is sufficient to rinse the dirty filter sponges under lukewarm running water and then inoculate them with filter bacteria (JBL FilterStart) before using them again. However, as mechanical cleaning NEVER leads to complete cleaning and dirt will remain in the filter sponge, it is recommended you replace the filter sponges about every 6 months.

Inoculating filter material with cleansing bacteria:

Initial colonisation of filter material with cleansing bacteria takes about 1-2 weeks in freshwater and twice as long in seawater. If the filter material was already in use, the time for a "recolonisation" is doubled, as recolonisation does not take place so easily on dead bacterial lawns. The addition of a cleansing bacteria concentrate, such as in JBL FilterStart, shortens the biological start-up time to about 24 hours. Another benefit is that when you fill the existing settlement space in the filter material with beneficial bacteria, pathogenic germs find no place to spread. This has now been scientifically proven.

| Further information | |
|-----------------------|---|
| FAQ | ✓ |
| Blog | ✓ |
| Press | ✗ |
| Laboratory/calculator | ✗ |
| Worth reading | ✓ |
| Spare parts | ✗ |
| Video | ✗ |
| GarantiePlus | ✗ |
| Instructions | ✓ |
| QR code |  |





JBL CRISTALPROFI COMBIFILTER Basket II



Product details

| Article data | | |
|--------------------------|---|---|
| Product name | JBL CP COMBIFILTER Basket II e4/7/901,2 | JBL CP COMBIFILTER Basket II e15/1901,2 |
| Art. No. | 6029300 | 6029400 |
| EAN number | 4014162602930 | 4014162602947 |
| EAN as barcode | | |
| For CPe | 4/7/901,2 | 15/1901,2 |
| - | - | - |
| Expiry months | - | - |
| RRP incl. VAT | 16,68 € | 20,50 € |
| Base price | - | - |
| Nominal filling quantity | - | - |
| Base quantity | 1 | 1 |
| Gross weight | 293 g | 424.8 g |
| Net weight | 200 g | 290 g |
| Weight change | - | - |

| Disposal | | |
|-------------------------|---|---|
| Product name | JBL CP COMBIFILTER Basket II e4/7/901,2 | JBL CP COMBIFILTER Basket II e15/1901,2 |
| Art. No. | 6029300 | 6029400 |
| Green dot | ✓ | ✓ |
| Group electronic waste | - | - |
| Disposal weight | - | - |
| Battery type | - | - |
| Battery return | - | - |
| Battery rechargeable | - | - |
| Disposal weight battery | - | - |
| Non-returnable glass | - | - |
| PPK | 93 g | 127.5 g |
| Plastic small | 6 g | - |
| Plastic large | - | - |
| Disposal weight metal | 0 g | 0 g |

| Features | | |
|--------------|---|---|
| Product name | JBL CP COMBIFILTER Basket II e4/7/901,2 | JBL CP COMBIFILTER Basket II e15/1901,2 |
| Art. No. | 6029300 | 6029400 |





| Features | | |
|----------------------|--|--|
| Animal species | Armored catfish, Arowana, Axolotl, Barbels, Bettas, Bichirs/ reedfish, Blowfish, Catfish, Cichlids (South America), Clawed frogs, Clawed shrimps, Corals, Crayfish, Crustaceans, Danions, Discus, Dwarf crayfish, Dwarf shrimps, Flowerhorn, Gill maggots, Gobies, Goldfish, Gouramis, Guppy, Juvenile fish, Killifish, Livebearers, Loaches, Mussels, Newts, Panchaxes, Rainbowfish, Snails, Spiny eels, Terrapins, Tetra, Tropical terrapins, Veiltails, blood parrot cichlids, freshwater butterflyfish, turtle | Armored catfish, Arowana, Axolotl, Barbels, Bettas, Bichirs/ reedfish, Blowfish, Catfish, Cichlids (South America), Clawed frogs, Clawed shrimps, Corals, Crayfish, Crustaceans, Danions, Discus, Dwarf crayfish, Dwarf shrimps, Flowerhorn, Gill maggots, Gobies, Goldfish, Gouramis, Guppy, Juvenile fish, Killifish, Livebearers, Loaches, Mussels, Newts, Panchaxes, Rainbowfish, Snails, Spiny eels, Terrapins, Tetra, Tropical terrapins, Veiltails, blood parrot cichlids, freshwater butterflyfish, turtle |
| Animal size | For all animal sizes | For all animal sizes |
| Animal age group | All aquarium fish | All aquarium fish |
| Volume of habitat | > 300 L | 800 L |
| Material | plastic (ABS) | plastic (ABS) |
| Food type | - | - |
| Colour | grey / blue | grey / blue |
| Dosage | - | - |
| Transport conditions | - | - |





JBL CRISTALPROFI COMBIFILTER Basket II

| Electronic label / illuminant | | |
|-------------------------------|--|--|
| Product name | JBL CP COMBIFILTER Basket II e4/7/901,2 | JBL CP COMBIFILTER Basket II e15/1901,2 |
| Art. No. | 6029300 | 6029400 |
| Ambient temperature | - | - |
| Start time | - | - |
| Mercury | - | - |
| Tube length | - | - |
| Service life | - | - |
| Lumen | - | - |
| CRI value | - | - |
| Dimmable | - | - |
| Switching cycles | - | - |
| PAR value | - | - |
| Energy efficiency class | - | - |
| UV-A | - | - |
| UV-B | - | - |
| UV-C | - | - |
| Colour temperature | - | - |
| Base designation | - | - |

| Technical data | | |
|-------------------------------|--|--|
| Product name | JBL CP COMBIFILTER Basket II e4/7/901,2 | JBL CP COMBIFILTER Basket II e15/1901,2 |
| Art. No. | 6029300 | 6029400 |
| Range in litres | - | - |
| Range from - to | - | - |
| Range in days | - | - |
| Range tank length | - | - |
| Output in watts | - | - |
| Output per hour | - | - |
| Output per day | - | - |
| Height | - | 87 mm |
| Length | - | 218 mm |
| Width | - | 184 mm |
| Diameter | - | - |
| Voltage | - | - |
| For | - | - |
| T8 26mm (watt) | - | - |
| T5 16mm (watt) | - | - |
| Size | - | - |
| Content for | - | - |
| Filter container volume | - | - |
| Volume filter media | - | - |
| Hose connections pressure/out | - | - |





| Technical data | | |
|-----------------------------|---|---|
| Hose connections suction/in | - | - |
| Delivery head | - | - |





JBL CRISTALPROFI COMBIFILTER Basket II

| | |
|------------------|---|
| Food type | - |
| Sub product type | - |
| Dosing | - |





Additional information for the specialist trade sector

| Article data | | |
|----------------------|---|---|
| Product name | JBL CP COMBIFILTER Basket II e4/7/901,2 | JBL CP COMBIFILTER Basket II e15/1901,2 |
| Art. No. | 6029300 | 6029400 |
| VAT | 19% | 19% |
| Sales unit (SU) | 1 | 1 |
| Volume packaging | 2.8l | 4.6l |
| Dimensions (l/w/h) | 80 mm/200 mm/175 mm | 105 mm/225 mm/195 mm |
| Layer | 80 | 80 |
| Pallet | 320 | 240 |
| Category of products | 3 | 3 |
| Customs tariff | 84219990 | 84219990 |
| Country of origin | CN | CN |
| Type of packaging | Faltschachtel/Karton | Faltschachtel/Karton |

| PU 1 data | | |
|------------------|---|---|
| Product name | JBL CP COMBIFILTER Basket II e4/7/901,2 | JBL CP COMBIFILTER Basket II e15/1901,2 |
| Art. No. | 6029300 | 6029400 |
| PU 1 material | cardboard gr | cardboard gr |
| PU 1 weight | 650 g | 720 g |
| PU 1 length | 400 mm | 400 mm |
| PU 1 width/depth | 420 mm | 420 mm |
| PU 1 height | 340 mm | 370 mm |

| PU 2 data | | |
|------------------|---|---|
| Product name | JBL CP COMBIFILTER Basket II e4/7/901,2 | JBL CP COMBIFILTER Basket II e15/1901,2 |
| Art. No. | 6029300 | 6029400 |
| PU 2 material | None | None |
| PU 2 weight | - | - |
| PU 2 length | - | - |
| PU 2 width/depth | - | - |
| PU 2 height | 340 mm | 370 mm |

| Trade data | | |
|-------------------|---|---|
| Product name | JBL CP COMBIFILTER Basket II e4/7/901,2 | JBL CP COMBIFILTER Basket II e15/1901,2 |
| Art. No. | 6029300 | 6029400 |
| Till receipt text | CombiBasket | CombiBasket |
| Shelf placement | - | - |