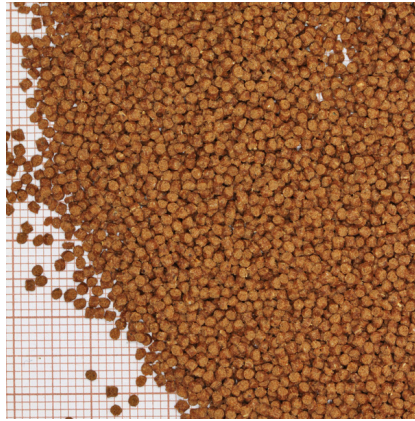




JBL PROPOND BIOTOPE XS

Pond food for all biotope fish



- Complete food with the right protein/fat ratio 4:1 in accordance with the NEO index which takes temperature, function, animal size and age into account
- With salmon, shrimps, spirulina and plant components for a nature-near nutrition for biotope fish, such as sunbleak, gudgeon, stickleback, minnow etc. (at 10-30 °C water temperature)
- Food size XS (1.5 mm) for fish from 5-15 cm
- Sinking food pearls with 34 % protein, 8 % fat, 4 % crude fibre and 12 % crude ash
- Small food pearls in resealable (air, water and lightproof) plastic tin for the preservation of quality



JBL PROPOND BIOTOPE XS



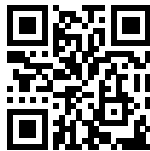
Product information

As well as koi and goldfish many pond owners keep further “native” fish species in their pond. These Central European or North American fish species are referred to as biotope fish. The most common species are: sunbleaks, gudgeons, orfes & ides, three-spined sticklebacks, European bitterlings, common minnow species and others.

Most biotope fish are small animal eaters. Some species also eat herbal elements.

Since goldfish and koi have a different food spectrum and also often a different size, biotope fish which are mostly significantly smaller need to be fed with a special biotope fish food, such as JBL ProPond Biotope.

During the feeding goldfish and koi will certainly also eat JBL ProPond Biotope. But this shouldn't be a problem because they like and tolerate the ingredients of this food, too.

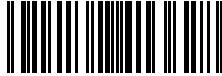

Further information	
FAQ	✓
Blog	✓
Press	✓
Laboratory/calculator	✗
Worth reading	✓
Spare parts	✗
Video	✓
GarantiePlus	✗
Instructions	✗
QR code	





JBL PROPOND BIOTOPE XS

Product details

Article data		
Product name	JBL PROPOND BIOTOPE XS 0.53 kg	JBL PROPOND BIOTOPE XS 0.53kg
Art. No.	4136200	4136300
EAN number	4014162413628	4014162413635
EAN as barcode		
Weight	1 l	0,53 kg
Size	0,53 kg	1 l
Expiry months	36	36
RRP incl. VAT	9,98 €	10,42 €
Base price	18,83 €	19,66 €
Nominal filling quantity	0.53 kg	0.53 kg
Base quantity	1 kg	1 kg
Gross weight	608.9 g	609.956 g
Net weight	530 g	530 g
Weight change	-	-

Disposal		
Product name	JBL PROPOND BIOTOPE XS 0.53 kg	JBL PROPOND BIOTOPE XS 0.53kg
Art. No.	4136200	4136300
Green dot	✓	✓
Group electronic waste	-	-
Disposal weight	-	-
Battery type	-	-
Battery return	-	-
Battery rechargeable	-	-
Disposal weight battery	-	-
Non-returnable glass	-	-
PPK	-	-
Plastic small	74 g	79.96 g
Plastic large	-	-
Disposal weight metal	0 g	0 g

Features		
Product name	JBL PROPOND BIOTOPE XS 0.53 kg	JBL PROPOND BIOTOPE XS 0.53kg
Art. No.	4136200	4136300
Animal species	-	-
Animal size	5 - 15 cm	5 - 15 cm
Animal age group	Small pond fish	Small pond fish
Volume of habitat	-	For all ponds



Features		
Material	You will find details of the materials used under Details & Composition	You will find details of the materials used under Details & Composition
Food type	granulates	granulates
Colour	brown	brown
Dosage	Feed 1 – 2 times a day, as much as can be eaten within a few minutes	Feed 1 – 2 times a day, as much as can be eaten within a few minutes
Transport conditions	-	-





JBL PROPOND BIOTOPE XS

Electronic label / illuminant		
Product name	JBL PROPOND BIOTOPE XS 0.53 kg	JBL PROPOND BIOTOPE XS 0.53kg
Art. No.	4136200	4136300
Ambient temperature	-	-
Start time	-	-
Mercury	-	-
Tube length	-	-
Service life	-	-
Lumen	-	-
CRI value	-	-
Dimmable	-	-
Switching cycles	-	-
PAR value	-	-
Energy efficiency class	-	-
UV-A	-	-
UV-B	-	-
UV-C	-	-
Colour temperature	-	-
Base designation	-	-

Technical data		
Product name	JBL PROPOND BIOTOPE XS 0.53 kg	JBL PROPOND BIOTOPE XS 0.53kg
Art. No.	4136200	4136300
Range in litres	-	-
Range from - to	-	-
Range in days	-	-
Range tank length	-	-
Output in watts	-	-
Output per hour	-	-
Output per day	-	-
Height	-	-
Length	-	-
Width	-	-
Diameter	-	-
Voltage	-	-
For	-	-
T8 26mm (watt)	-	-
T5 16mm (watt)	-	-
Size	-	-
Content for	-	-
Filter container volume	-	-
Volume filter media	-	-
Hose connections pressure/out	-	-
Hose connections suction/in	-	-





Technical data		
Delivery head	-	-

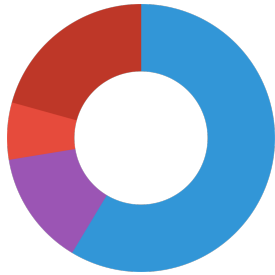




JBL PROPOND BIOTOPE XS

Food type	granulates
Sub product type	complete food for ornamental fish
Dosing	Feed 1 - 2 times a day, as much as can be eaten within a few minutes

Analytical components



Crude protein	34 %
Fat content	8 %
Crude fibre	4 %
Crude ash	12 %

Composition



salmon meal
shrimp meal
soy bean meal
wheat germs
rice meal
seaweed meal
oatmeal
corn meal
green meal
yeast extract
methionine

Additives

Colourings
Astaxanthin

Vitamins, provitamins and other chemically defined substances having a similar effect (per 1000 g)

Vitamin A	25000 I. E.
Vitamin D ₃	2000 I. E.
Vitamin E	300 mg
Vitamin C(stable)	200 mg



Additional information for the specialist trade sector

Article data		
Product name	JBL PROPOND BIOTOPE XS 0.53 kg	JBL PROPOND BIOTOPE XS 0.53kg
Art. No.	4136200	4136300
VAT	7%	7%
Sales unit (SU)	3	3
Volume packaging	1.72l	1.26l
Dimensions (l/w/h)	98 mm/98 mm/179 mm	90 mm/90 mm/198 mm
Layer	144	192
Pallet	576	576
Category of products	1	1
Customs tariff	23099041	23099041
Country of origin	DE	DE
Type of packaging	can	can

PU 1 data		
Product name	JBL PROPOND BIOTOPE XS 0.53 kg	JBL PROPOND BIOTOPE XS 0.53kg
Art. No.	4136200	4136300
PU 1 material	film gr	film gr
PU 1 weight	7 g	9.39 g
PU 1 length	103 mm	270 mm
PU 1 width/depth	300 mm	90 mm
PU 1 height	179 mm	198 mm

PU 2 data		
Product name	JBL PROPOND BIOTOPE XS 0.53 kg	JBL PROPOND BIOTOPE XS 0.53kg
Art. No.	4136200	4136300
PU 2 material	cardboard gr	cardboard gr
PU 2 weight	510 g	468 g
PU 2 length	315 mm	284 mm
PU 2 width/depth	415 mm	374 mm
PU 2 height	340 mm	408 mm

Trade data		
Product name	JBL PROPOND BIOTOPE XS 0.53 kg	JBL PROPOND BIOTOPE XS 0.53kg
Art. No.	4136200	4136300
Till receipt text	PP Biotope S	PP Biotope S
Shelf placement	ProPond rack	-