

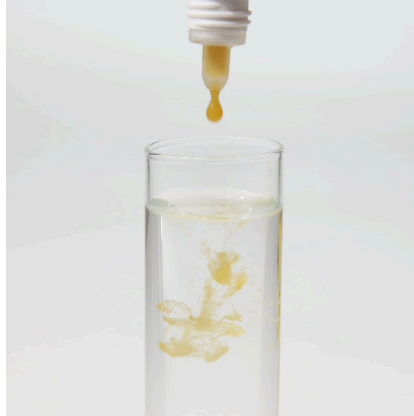


# JBL PRONOVO BEL FLUID



Liquid rearing food for very small fry

Suitable for:



- Complete nutrition: ultra-fine homogenate (very fine food dissolved in water) made from over 50 natural ingredients
- Nutritious, easy to digest and ideal growth thanks to brine shrimp components. Ideal feeding conditions for young fish which are still too small for powder food
- No water clouding, better water quality due to optimal digestibility of the food, which reduces fish excretions
- Natural raw ingredients for a natural diet and healthy aquarium fish
- Package contents: 1 bottle with dropper for the exact dosage of the liquid feed included

You may also be interested in

You can find a complete overview here: <https://www.jbl.de/qr/31126>



**JBL PlanktonPur  
SMALL**

Treats for small aquarium fish



**JBL PlanktonPur  
MEDIUM**

Treats for large aquarium fish





# JBL PRONOVO BEL FLUID



## Product information

The composition of the ideal rearing feed for young fish is based on a variety of factors. The juvenile fish are growing and need important nutrients for their development. Essential vitamins are necessary to strengthen their immune system. With young fish it is very important that the food size fits their mouth size. It is better to feed a food that is too small than one that is too large! The appropriate phosphate content of the food is essential for healthy bone formation. Too little phosphate and calcium will lead to bone deformities.


When the young fish are big enough, a supplement of live Artemia (brine shrimps) is ideal. JBL offers a complete programme for this = JBL Artemio.

A distinction is made between juveniles of egg-laying and viviparous species. The young fish of egg-laying species are much smaller after hatching and initially feed on infusoria (microorganisms) that they find in their environment. Many species then also accept liquid food (JBL PRONOVO BEL FLUID). Shortly afterwards they will accept fine powdered food (JBL PRONOVO BEL GRANO BABY or the powdered food from the first poche of JBL PRONOVO BEL FLAKES BABY). As soon as they have grown a little more, you can switch to the second poche of JBL PRONOVO BEL FLAKES BABY and later to the third poche. If the parents are brooders (as with cichlids), a long pipette or a piece of hose helps to bring the food dissolved in water directly to the young fish.

In viviparous or even mouth-breeding species the young fish are larger and immediately eat the food from the second poche of JBL PRONOVO FLAKES BABY and live Artemia (JBL Artemio System).

### Ahead through research

The results of JBL research expeditions, together with the knowledge of the JBL research and development team, have produced optimal, balanced food mixtures made from high-quality ingredients.

Further information	
FAQ	×
Blog	×
Press	✓
Laboratory/calculator	×
Worth reading	×
Spare parts	×
Video	✓
GarantiePlus	×
Instructions	✓
QR code	

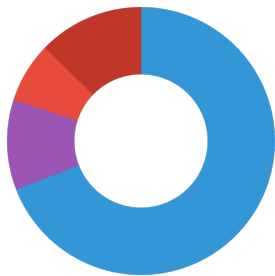




# JBL PRONOVO BEL FLUID

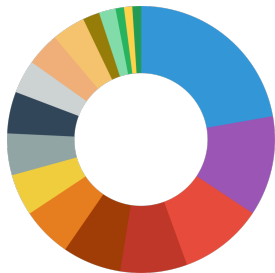
Food type	rearing diet
Sub product type	complete food for ornamental fish
Dosing	Shake before use. Do not start feeding until the yolk sac has been consumed and the larvae are swimming free. For small livebearers, feeding must start immediately after birth. The pictogram on the folding box will show 3-4 times a day.

## Analytical components



Crude protein	38 %
Fat content	6 %
Crude fibre	4 %
Crude ash	7 %

## Composition



salmon meal
wheat meal
Artemia
shrimp meal
soy bean meal
wheat germs
krill meal
yeast extract
wheat gluten
spirulina
octopus meal
rice meal
Garlic powder
corn meal
Apple fibre
guar gum
Beetroot

## Additives

<b>Antioxidants</b>
1b306(i)

