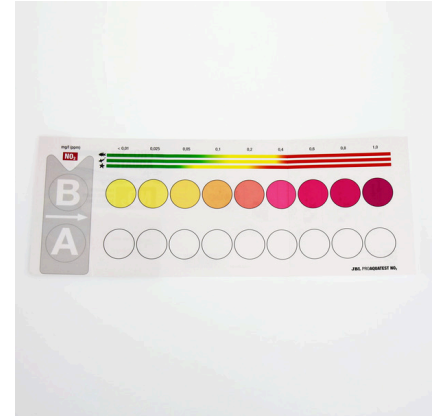




JBL PROAQUATEST NO2 Nitrite

Quick test to determine the nitrite content

Suitable for:



- Nitrite is a toxic nitrogen compound, which is formed when the bacterial balance is disturbed or when setting up a new aquarium. The test shows the exact nitrite content of the water
- Laboratory comparator system to compensate the inherent water colour: fill glass vials with sample water, add reagents to one vial, place vials in holder, read values off colour chart
- Use: when setting up a new freshwater aquarium: daily for 3 weeks. For initial setup with marine water: once a week. For use with fish diseases or fish deaths
- You will find detailed information and troubleshooting tips about water analysis on the JBL website in Essentials/Aquarium or Pond
- Package contents: 1 nitrite test for approx. 50 measurements, incl. 2 reagents, 2 glass vials with screw caps, syringe, comparator block and colour scale. Reagent refill separately available

You may also be interested in

You can find a complete overview here: <https://www.jbl.de/qr/24123>



JBL PROAQUATEST COMBISET Plus Fe

Test case with most important water tests + iron test



JBL PROAQUATEST COMBISET Plus NH₄

Test case with most important water tests + NH₄ test



JBL PROAQUATEST LAB

Test case with 13 water tests for freshwater analysis



JBL PROAQUATEST LAB Marin

Professional test case for marine water analysis





JBL PROAQUATEST NO2 Nitrite

 Spare parts



JBL component set for water tests



JBL PROAQUATEST range colour charts





JBL PROAQUATEST NO2 Nitrite



Product information

Healthy aquarium/healthy pond with conditions close to nature

The right water values are dependent on the fish stock and the plants in the aquarium/pond. Even if the water looks clear it can be contaminated. With bad values diseases or algae can appear in the aquarium/pond. To maintain a healthy aquarium/pond with conditions close to nature it is important to check and adapt the water values regularly.

For each water analysis JBL provides water tests in the form of quick tests or colour change tests. These determine a certain value or several values in one go. With these water tests you can recognise algae problems and negative nitrate, nitrite, potassium, magnesium values etc.

Why test:

Nitrite is produced when bacteria degrade protein and ammonium. It is normally processed further into non-toxic nitrate. In aquarium and pond water nitrite (NO₂) should not be measurable. If nitrate is measurable, it is a sign that the bacterial degradation process has been disturbed. From a concentration of 0.4 mg/l onwards it is dangerous or even fatal for fish, because nitrite blocks the transport of oxygen in the blood. This can be remedied by water changes and good bacteria starters, such as JBL Denitrol and JBL BactoPond.

Recommended nitrite values:

Freshwater aquarium (community aquarium): 0-0.2 mg/l

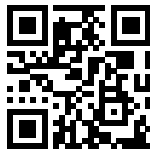
Lake Malawi/Lake Tanganyika aquarium: 0-0.2 mg/l

Plant aquarium with few fish (aquascaping): 0-0.2 mg/l

Marine aquarium: 0-0.2 mg/l

Pond: 0-0.2 mg/l

You can analyse the water values you have measured in the JBL Online Laboratory free of charge and receive recommendations.

| Further information | |
|-----------------------|---|
| FAQ | ✓ |
| Blog | ✓ |
| Press | ✓ |
| Laboratory/calculator | ✗ |
| Worth reading | ✓ |
| Spare parts | ✓ |
| Video | ✓ |
| GarantiePlus | ✗ |
| Instructions | ✓ |
| QR code |  |





JBL PROAQUATEST NO2 Nitrite

Product details

| Article data | | |
|--------------------------|-----------------------------|----------------------------|
| Product name | JBL PROAQUATEST NO2 Nitrite | JBL PROAQUATEST NO2 REFILL |
| Art. No. | 2412300 | 2412400 |
| EAN number | 4014162241238 | 4014162241245 |
| EAN as barcode | | |
| For | 50 Tests | Refill |
| - | - | - |
| Expiry months | 36 | 36 |
| RRP incl. VAT | 17,99 € | 8,94 € |
| Base price | - | - |
| Nominal filling quantity | - | - |
| Base quantity | 1 | 1 |
| Gross weight | 144.5 g | 59 g |
| Net weight | 97 g | 31 g |
| Weight change | - | - |

| Disposal | | |
|-------------------------|-----------------------------|----------------------------|
| Product name | JBL PROAQUATEST NO2 Nitrite | JBL PROAQUATEST NO2 REFILL |
| Art. No. | 2412300 | 2412400 |
| Green dot | ✓ | ✓ |
| Group electronic waste | - | - |
| Disposal weight | - | - |
| Battery type | - | - |
| Battery return | - | - |
| Battery rechargeable | - | - |
| Disposal weight battery | - | - |
| Non-returnable glass | - | - |
| PPK | 27 g | 7.5 g |
| Plastic small | 20 g | 20 g |
| Plastic large | - | - |
| Disposal weight metal | 0 g | 0 g |

| Features | | |
|--------------|-----------------------------|----------------------------|
| Product name | JBL PROAQUATEST NO2 Nitrite | JBL PROAQUATEST NO2 REFILL |
| Art. No. | 2412300 | 2412400 |





| Features | | |
|----------------------|--|--|
| Animal species | Armored catfish, Arowana, Axolotl, Barbels, Bettas, Bichirs/ reedfish, Blowfish, Catfish, Cichlids (South America), Clawed frogs, Clawed shrimps, Corals, Crayfish, Crustaceans, Danions, Discus, Dwarf crayfish, Dwarf shrimps, Flowerhorn, Gill maggots, Gobies, Goldfish, Gouramis, Guppy, Juvenile fish, Killifish, Livebearers, Loaches, Mussels, Newts, Panchaxes, Rainbowfish, Snails, Spiny eels, Terrapins, Tetra, Tropical terrapins, Veiltails, blood parrot cichlids, freshwater butterflyfish, turtle | Armored catfish, Arowana, Axolotl, Barbels, Bettas, Bichirs/ reedfish, Blowfish, Catfish, Cichlids (South America), Clawed frogs, Clawed shrimps, Corals, Crayfish, Crustaceans, Danions, Discus, Dwarf crayfish, Dwarf shrimps, Flowerhorn, Gill maggots, Gobies, Goldfish, Gouramis, Guppy, Juvenile fish, Killifish, Livebearers, Loaches, Mussels, Newts, Panchaxes, Rainbowfish, Snails, Spiny eels, Terrapins, Tetra, Tropical terrapins, Veiltails, blood parrot cichlids, freshwater butterflyfish, turtle |
| Animal size | For all animal sizes | For all animal sizes |
| Animal age group | All aquarium fish | All aquarium fish |
| Volume of habitat | - | - |
| Material | Reagent(s) in plastic bottle(s) and/ or glass bottle(s) + plastic and/or glass accessories. REFILL: reagent (s) without accessories. | Reagent(s) in plastic bottle(s) and/ or glass bottle(s) + plastic and/or glass accessories. REFILL: reagent (s) without accessories. |
| Food type | - | - |
| Colour | white / transparent / black | white / transparent / black |
| Dosage | See instructions | See instructions |
| Transport conditions | - | - |



JBL PROAQUATEST NO2 Nitrite

| Electronic label / illuminant | | |
|-------------------------------|-----------------------------|----------------------------|
| Product name | JBL PROAQUATEST NO2 Nitrite | JBL PROAQUATEST NO2 REFILL |
| Art. No. | 2412300 | 2412400 |
| Ambient temperature | - | - |
| Start time | - | - |
| Mercury | - | - |
| Tube length | - | - |
| Service life | - | - |
| Lumen | - | - |
| CRI value | - | - |
| Dimmable | - | - |
| Switching cycles | - | - |
| PAR value | - | - |
| Energy efficiency class | - | - |
| UV-A | - | - |
| UV-B | - | - |
| UV-C | - | - |
| Colour temperature | - | - |
| Base designation | - | - |

| Technical data | | |
|-------------------------------|-----------------------------|----------------------------|
| Product name | JBL PROAQUATEST NO2 Nitrite | JBL PROAQUATEST NO2 REFILL |
| Art. No. | 2412300 | 2412400 |
| Range in litres | - | - |
| Range from - to | - | - |
| Range in days | - | - |
| Range tank length | - | - |
| Output in watts | - | - |
| Output per hour | - | - |
| Output per day | - | - |
| Height | 175 mm | 64 mm |
| Length | 106 mm | 48 mm |
| Width | 43 mm | 24 mm |
| Diameter | - | - |
| Voltage | - | - |
| For | - | - |
| T8 26mm (watt) | - | - |
| T5 16mm (watt) | - | - |
| Size | - | - |
| Content for | - | - |
| Filter container volume | - | - |
| Volume filter media | - | - |
| Hose connections pressure/out | - | - |
| Hose connections suction/in | - | - |
| Delivery head | - | - |





JBL PROAQUATEST NO2 Nitrite



| | |
|------------------|------------------|
| Food type | - |
| Sub product type | - |
| Dosing | See instructions |








JBL PROAQUATEST NO2 Nitrite

Safety information

| JBL NO2 1 - safety information in accordance with GHS | |
|---|---|
| Signal word | Danger |
| Hazard symbol |   |
| Risk phrase | H226: Flammable liquid and vapour. H314: Causes severe skin burns and eye damage. H318: Causes serious eye damage. |
| safety note | P101: If medical advice is needed, have product container or label at hand. P102: Keep out of reach of children. P303+P361+P353: IF ON SKIN (or hair): Take off immediately all contaminated clothing. Rinse skin with water [or shower]. P305+P351+P338: IF IN EYES: Rinse cautiously with water for several minutes. Remove contact lenses, if present and easy to do. Continue rinsing. P501a: Dispose of contents/container in accordance with local regulations. |
| Hazard-determining component | 64-19-7: Acetic acid |

| JBL NO2 2 - safety information in accordance with GHS | |
|---|---|
| Signal word | Warning |
| Hazard symbol |   |
| Risk phrase | H226: Flammable liquid and vapour. H319: Causes serious eye irritation. |
| safety note | P101: If medical advice is needed, have product container or label at hand. P102: Keep out of reach of children. P303+P361+P353: IF ON SKIN (or hair): Take off immediately all contaminated clothing. Rinse skin with water [or shower]. P305+P351+P338: IF IN EYES: Rinse cautiously with water for several minutes. Remove contact lenses, if present and easy to do. Continue rinsing. |

| Further safety information | |
|----------------------------|--|
| Safety instructions | ✓ |
| QR code |  |





Additional information for the specialist trade sector

| Article data | | |
|----------------------|-----------------------------|-------------------------------|
| Product name | JBL PROAQUATEST NO2 Nitrite | JBL PROAQUATEST NO2 REFILL |
| Art. No. | 2412300 | 2412400 |
| VAT | 19% | 19% |
| Sales unit (SU) | 3 | 1 |
| Volume packaging | 0.8l | 0.57l |
| Dimensions (l/w/h) | 43 mm/106 mm/175 mm | 30 mm/110 mm/175 mm |
| Layer | 240 | 800 |
| Pallet | 720 | 2400 |
| Category of products | 1 | 1 |
| Customs tariff | 38221100 | 38221100 |
| Country of origin | DE | DE |
| Type of packaging | Faltschachtel/Karton | Skin / blister card packaging |

| PU 1 data | | |
|------------------|-----------------------------|----------------------------|
| Product name | JBL PROAQUATEST NO2 Nitrite | JBL PROAQUATEST NO2 REFILL |
| Art. No. | 2412300 | 2412400 |
| PU 1 material | film gr | cardboard gr |
| PU 1 weight | 3.5 g | 660 g |
| PU 1 length | 106 mm | 580 mm |
| PU 1 width/depth | 130 mm | 390 mm |
| PU 1 height | 180 mm | 310 mm |

| PU 2 data | | |
|------------------|-----------------------------|----------------------------|
| Product name | JBL PROAQUATEST NO2 Nitrite | JBL PROAQUATEST NO2 REFILL |
| Art. No. | 2412300 | 2412400 |
| PU 2 material | cardboard gr | None |
| PU 2 weight | 540 g | - |
| PU 2 length | 400 mm | - |
| PU 2 width/depth | 400 mm | - |
| PU 2 height | 350 mm | - |

| Trade data | | |
|-------------------|---|---|
| Product name | JBL PROAQUATEST NO2 Nitrite | JBL PROAQUATEST NO2 REFILL |
| Art. No. | 2412300 | 2412400 |
| Till receipt text | Test NO2 | Refill NO2 |
| Shelf placement | Test shelf, water treatment troubleshooting | Test shelf, water treatment troubleshooting |