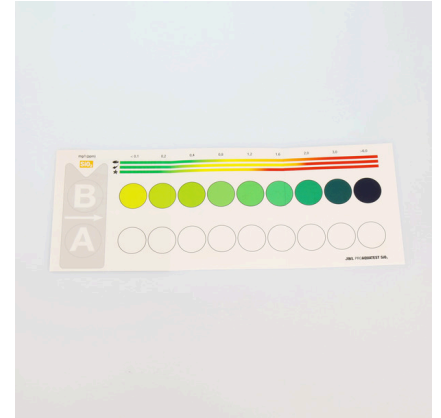




JBL PROAQUATEST SiO₂ Silicate

Quick test to determine the silicate content

Suitable for:



- Silicates (silicic acid) are the cause of unsightly diatoms. With this test you determine the silicate content for diatom control in freshwater and marine aquariums
- Laboratory comparator system to compensate the inherent water colour: fill glass vials with sample water, add reagents to one vial, place vials in holder, read values off colour chart
- Use: when setting up a new aquarium, for checking tap water and during diatom problems
- You will find detailed information and troubleshooting tips about water analysis on the JBL website in Essentials/Aquarium
- Package contents: 1 silicate test for approx. 50 measurements, incl. 2 reagents, 2 glass vials with screw caps, dosing spoon, syringe, comparator block and colour scale. Reagent refill separately available

You may also be interested in

You can find a complete overview here: <https://www.jbl.de/qr/24118>



JBL PROAQUATEST LAB
Test case with 13 water tests for freshwater analysis



JBL PROAQUATEST LAB PROSCAPE
Test case for water analysis in plant aquariums



JBL PROAQUATEST LAB Marin
Professional test case for marine water analysis





JBL PROAQUATEST SiO₂ Silicate

 Spare parts



JBL component set for water tests



JBL PROAQUATEST range colour charts





JBL PROAQUATEST SiO₂ Silicate

Product information

Healthy aquariums with conditions close to nature

The right water values are dependent on the fish stock and the plants in the aquarium. Even if the water looks clear it can be contaminated. With bad values diseases or algae can appear in the aquarium. To maintain a healthy aquarium with conditions close to nature it is important to check and adapt the water values regularly.

For each water analysis JBL provides water tests in the form of rapid tests or colour change tests. These determine a certain value or several values in one go. With these water tests you can recognise algae problems and negative nitrate, nitrite, potassium, magnesium values etc.

Why test?

Silicon is one of the most common elements in the world. As a result of the weathering of silicate rocks, silicon is washed into surface and ground water in the form of silicate. Depending on the composition of the rocks in a particular area, the mains water will contain varying amounts of dissolved silicate. The significance of silicon for aquariums and garden ponds is as a nutrient for diatoms, some aquatic plants, siliceous sponges and many other invertebrates.

JBL Online Laboratory

Regular monitoring for a healthy aquarium with conditions close to nature. Enter your water values into the JBL Online Laboratory and get an in-depth analysis of your values within seconds.

Recommended silicate values:

Freshwater aquarium (community aquarium): 0-2.0 mg/l

Lake Malawi/Lake Tanganyika aquarium: the silicate content is not relevant here because grazing fish species like eating diatoms

Plant aquarium with few fish (aquascaping): 0-2.0 mg/l

Marine water Aquarium: 0-1.0 mg/l

Pond: 0-2.0 mg/l

| Further information | |
|-----------------------|---|
| FAQ | ✓ |
| Blog | ✓ |
| Press | ✓ |
| Laboratory/calculator | ✗ |
| Worth reading | ✓ |
| Spare parts | ✓ |
| Video | ✓ |
| GarantiePlus | ✗ |
| Instructions | ✓ |
| QR code | |





JBL PROAQUATEST SiO₂ Silicate



Product details

| Article data | | |
|--------------------------|---|---|
| Product name | JBL PROAQUATEST SiO ₂ Silicate | JBL PROAQUATEST SiO ₂ REFILL |
| Art. No. | 2411800 | 2411900 |
| EAN number | 4014162241184 | 4014162241191 |
| EAN as barcode | | |
| For | 50 Tests | Refill |
| - | - | - |
| Expiry months | 36 | 36 |
| RRP incl. VAT | 25,89 € | 8,12 € |
| Base price | - | - |
| Nominal filling quantity | - | - |
| Base quantity | 1 | 1 |
| Gross weight | 193 g | 74.5 g |
| Net weight | 132 g | 33 g |
| Weight change | - | - |

| Disposal | | |
|-------------------------|---|---|
| Product name | JBL PROAQUATEST SiO ₂ Silicate | JBL PROAQUATEST SiO ₂ REFILL |
| Art. No. | 2411800 | 2411900 |
| Green dot | ✓ | ✓ |
| Group electronic waste | - | - |
| Disposal weight | - | - |
| Battery type | - | - |
| Battery return | - | - |
| Battery rechargeable | - | - |
| Disposal weight battery | - | - |
| Non-returnable glass | 14 g | 14 g |
| PPK | 27 g | 7.5 g |
| Plastic small | 20 g | 20 g |
| Plastic large | - | - |
| Disposal weight metal | 0 g | 0 g |

| Features | | |
|--------------|---|---|
| Product name | JBL PROAQUATEST SiO ₂ Silicate | JBL PROAQUATEST SiO ₂ REFILL |
| Art. No. | 2411800 | 2411900 |





| Features | | |
|----------------------|--|--|
| Animal species | Armored catfish, Arowana, Axolotl, Barbels, Bettas, Bichirs/ reedfish, Blowfish, Catfish, Cichlids (South America), Clawed frogs, Clawed shrimps, Corals, Crayfish, Crustaceans, Danions, Discus, Dwarf crayfish, Dwarf shrimps, Flowerhorn, Gill maggots, Gobies, Goldfish, Gouramis, Guppy, Juvenile fish, Killifish, Livebearers, Loaches, Mussels, Newts, Panchaxes, Rainbowfish, Snails, Spiny eels, Terrapins, Tetra, Tropical terrapins, Veiltails, blood parrot cichlids, freshwater butterflyfish, turtle | Armored catfish, Arowana, Axolotl, Barbels, Bettas, Bichirs/ reedfish, Blowfish, Catfish, Cichlids (South America), Clawed frogs, Clawed shrimps, Corals, Crayfish, Crustaceans, Danions, Discus, Dwarf crayfish, Dwarf shrimps, Flowerhorn, Gill maggots, Gobies, Goldfish, Gouramis, Guppy, Juvenile fish, Killifish, Livebearers, Loaches, Mussels, Newts, Panchaxes, Rainbowfish, Snails, Spiny eels, Terrapins, Tetra, Tropical terrapins, Veiltails, blood parrot cichlids, freshwater butterflyfish, turtle |
| Animal size | For all animal sizes | For all animal sizes |
| Animal age group | All aquarium fish | All aquarium fish |
| Volume of habitat | - | - |
| Material | Reagent(s) in plastic bottle(s) and/ or glass bottle(s) + plastic and/or glass accessories. REFILL: reagent (s) without accessories. | Reagent(s) in plastic bottle(s) and/ or glass bottle(s) + plastic and/or glass accessories. REFILL: reagent (s) without accessories. |
| Food type | - | - |
| Colour | white / transparent / black | white / transparent / black |
| Dosage | See instructions | See instructions |
| Transport conditions | - | - |



JBL PROAQUATEST SiO₂ Silicate

| Electronic label / illuminant | | |
|-------------------------------|---|---|
| Product name | JBL PROAQUATEST SiO ₂ Silicate | JBL PROAQUATEST SiO ₂ REFILL |
| Art. No. | 2411800 | 2411900 |
| Ambient temperature | - | - |
| Start time | - | - |
| Mercury | - | - |
| Tube length | - | - |
| Service life | - | - |
| Lumen | - | - |
| CRI value | - | - |
| Dimmable | - | - |
| Switching cycles | - | - |
| PAR value | - | - |
| Energy efficiency class | - | - |
| UV-A | - | - |
| UV-B | - | - |
| UV-C | - | - |
| Colour temperature | - | - |
| Base designation | - | - |

| Technical data | | |
|-------------------------------|---|---|
| Product name | JBL PROAQUATEST SiO ₂ Silicate | JBL PROAQUATEST SiO ₂ REFILL |
| Art. No. | 2411800 | 2411900 |
| Range in litres | - | - |
| Range from - to | - | - |
| Range in days | - | - |
| Range tank length | - | - |
| Output in watts | - | - |
| Output per hour | - | - |
| Output per day | - | - |
| Height | 175 mm | 64 mm |
| Length | 106 mm | 72 mm |
| Width | 43 mm | 24 mm |
| Diameter | - | - |
| Voltage | - | - |
| For | - | - |
| T8 26mm (watt) | - | - |
| T5 16mm (watt) | - | - |
| Size | - | - |
| Content for | - | - |
| Filter container volume | - | - |
| Volume filter media | - | - |
| Hose connections pressure/out | - | - |
| Hose connections suction/in | - | - |
| Delivery head | - | - |





JBL PROAQUATEST SiO₂ Silicate

| | |
|------------------|------------------|
| Food type | - |
| Sub product type | - |
| Dosing | See instructions |





JBL PROAQUATEST SiO2 Silicate

Safety information

| JBL SiO2 1 - safety information in accordance with GHS | |
|--|---|
| Signal word | Danger |
| Hazard symbol | |
| Risk phrase | H314: Causes severe skin burns and eye damage. H318: Causes serious eye damage. |
| safety note | P101: If medical advice is needed, have product container or label at hand. P102: Keep out of reach of children. P303+P361+P353: IF ON SKIN (or hair): Take off immediately all contaminated clothing. Rinse skin with water [or shower]. P305+P351+P338: IF IN EYES: Rinse cautiously with water for several minutes. Remove contact lenses, if present and easy to do. Continue rinsing. P501a: Dispose of contents/container in accordance with local regulations. |
| Hazard-determining component | 7664-93-9: sulphuric acid |

| JBL SiO2 2 - safety information in accordance with GHS | |
|--|---|
| Signal word | Danger |
| Hazard symbol | |
| Risk phrase | H314: Causes severe skin burns and eye damage. H318: Causes serious eye damage. |
| safety note | P101: If medical advice is needed, have product container or label at hand. P102: Keep out of reach of children. P303+P361+P353: IF ON SKIN (or hair): Take off immediately all contaminated clothing. Rinse skin with water [or shower]. P305+P351+P338: IF IN EYES: Rinse cautiously with water for several minutes. Remove contact lenses, if present and easy to do. Continue rinsing. |
| Hazard-determining component | 87-69-4: (+)-tartaric acid |

| Further safety information | |
|----------------------------|---|
| Safety instructions | ✓ |
| QR code | |





Additional information for the specialist trade sector

| Article data | | |
|----------------------|-------------------------------|-------------------------------|
| Product name | JBL PROAQUATEST SiO2 Silicate | JBL PROAQUATEST SiO2 REFILL |
| Art. No. | 2411800 | 2411900 |
| VAT | 23% | 23% |
| Sales unit (SU) | 3 | 1 |
| Volume packaging | 0.8l | 0.57l |
| Dimensions (l/w/h) | 43 mm/106 mm/175 mm | 30 mm/110 mm/175 mm |
| Layer | 240 | 800 |
| Pallet | 720 | 2400 |
| Category of products | 1 | 1 |
| Customs tariff | 38221100 | 38221100 |
| Country of origin | DE | DE |
| Type of packaging | Faltschachtel/Karton | Skin / blister card packaging |

| PU 1 data | | |
|------------------|-------------------------------|-----------------------------|
| Product name | JBL PROAQUATEST SiO2 Silicate | JBL PROAQUATEST SiO2 REFILL |
| Art. No. | 2411800 | 2411900 |
| PU 1 material | film gr | cardboard gr |
| PU 1 weight | 3.5 g | 660 g |
| PU 1 length | 106 mm | 580 mm |
| PU 1 width/depth | 130 mm | 390 mm |
| PU 1 height | 180 mm | 310 mm |

| PU 2 data | | |
|------------------|-------------------------------|-----------------------------|
| Product name | JBL PROAQUATEST SiO2 Silicate | JBL PROAQUATEST SiO2 REFILL |
| Art. No. | 2411800 | 2411900 |
| PU 2 material | cardboard gr | None |
| PU 2 weight | 540 g | - |
| PU 2 length | 400 mm | - |
| PU 2 width/depth | 400 mm | - |
| PU 2 height | 350 mm | - |

| Trade data | | |
|-------------------|---|---|
| Product name | JBL PROAQUATEST SiO2 Silicate | JBL PROAQUATEST SiO2 REFILL |
| Art. No. | 2411800 | 2411900 |
| Till receipt text | Test SiO2 | Refill SiO2 |
| Shelf placement | Test shelf, water treatment troubleshooting | Test shelf, water treatment troubleshooting |