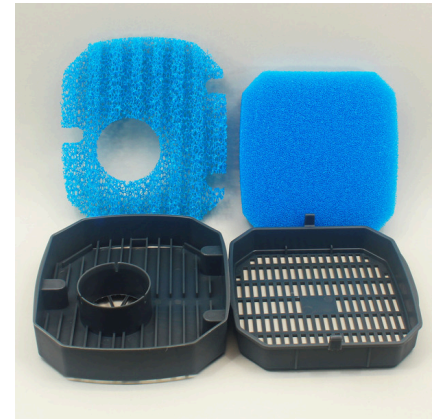




JBL CRISTALPROFI COMBIFILTER Basket II

filter basket replace. kit f. CristalProfi ext. filter

Suitable for:



- Optimised top filter basket with 100% more pre-filter surface including filter material
- Remove previous filter basket and insert new filter basket
- Optimises pre-filtering with JBL CristalProfi e 401, 701, 901, 1501 and 1901, which then are technically identical with JBL 402, 702 etc.
- Cleverly designed two-part filter basket: lower removable part contains post-filtering with 35 ppi (fine). Upper filter basket contains one-piece pre-filter mat with 100 % more surface and 15 ppi pore size
- Package contents: 2-part filter basket (separable through clip) with fine filter mat and coarse filter mat



JBL CRISTALPROFI COMBIFILTER Basket II

Product information

One of the advantages of the JBL CristalProfi external filter is the inner structure with the top mounted pre-filters which are easily accessible and thus easy and fast to clean.

Pre-filters are there to catch the coarse dirt which is sucked into the filter, so that it doesn't clog the underlying filter material. This filter basket has been designed to prevent the worst case scenario of coarse waste clogging the pre-filters, which can happen very fast. It contains one large one-piece pre-filter mat with at least the double surface of its predecessors (2 small externally arranged pre-filter mats).


This way the pre-filter doesn't clog as quickly and the high filter performance of the external filter is maintained.

Cleaning of plastics:

For many months it is sufficient to rinse the dirty filter sponges under lukewarm running water and then inoculate them with filter bacteria (JBL FilterStart) before using them again. However, as mechanical cleaning NEVER leads to complete cleaning and dirt will remain in the filter sponge, it is recommended you replace the filter sponges about every 6 months.

Inoculating filter material with cleansing bacteria:

Initial colonisation of filter material with cleansing bacteria takes about 1-2 weeks in freshwater and twice as long in seawater. If the filter material was already in use, the time for a "recolonisation" is doubled, as recolonisation does not take place so easily on dead bacterial lawns. The addition of a cleansing bacteria concentrate, such as in JBL FilterStart, shortens the biological start-up time to about 24 hours. Another benefit is that when you fill the existing settlement space in the filter material with beneficial bacteria, pathogenic germs find no place to spread. This has now been scientifically proven.

Further information	
FAQ	✓
Blog	✓
Press	✗
Laboratory/calculator	✗
Worth reading	✓
Spare parts	✗
Video	✗
GarantiePlus	✗
Instructions	✓
QR code	





JBL CRISTALPROFI COMBIFILTER Basket II

Product details

Article data		
Product name	JBL CP COMBIFILTER Basket II e4/7/901,2	JBL CP COMBIFILTER Basket II e15/1901,2
Art. No.	6029300	6029400
EAN number	4014162602930	4014162602947
EAN as barcode		
For CPe	4/7/901,2	15/1901,2
-	-	-
Expiry months	-	-
RRP incl. VAT	16,82 €	20,68 €
Base price	-	-
Nominal filling quantity	-	-
Base quantity	1	1
Gross weight	293 g	424.8 g
Net weight	200 g	290 g
Weight change	-	-

Disposal		
Product name	JBL CP COMBIFILTER Basket II e4/7/901,2	JBL CP COMBIFILTER Basket II e15/1901,2
Art. No.	6029300	6029400
Green dot	✓	✓
Group electronic waste	-	-
Disposal weight	-	-
Battery type	-	-
Battery return	-	-
Battery rechargeable	-	-
Disposal weight battery	-	-
Non-returnable glass	-	-
PPK	93 g	127.5 g
Plastic small	6 g	-
Plastic large	-	-
Disposal weight metal	0 g	0 g

Features		
Product name	JBL CP COMBIFILTER Basket II e4/7/901,2	JBL CP COMBIFILTER Basket II e15/1901,2
Art. No.	6029300	6029400





Features		
Animal species	Armored catfish, Arowana, Axolotl, Barbels, Bettas, Bichirs/ reedfish, Blowfish, Catfish, Cichlids (South America), Clawed frogs, Clawed shrimps, Corals, Crayfish, Crustaceans, Danions, Discus, Dwarf crayfish, Dwarf shrimps, Flowerhorn, Gill maggots, Gobies, Goldfish, Gouramis, Guppy, Juvenile fish, Killifish, Livebearers, Loaches, Mussels, Newts, Panchaxes, Rainbowfish, Snails, Spiny eels, Terrapins, Tetra, Tropical terrapins, Veiltails, blood parrot cichlids, freshwater butterflyfish, turtle	Armored catfish, Arowana, Axolotl, Barbels, Bettas, Bichirs/ reedfish, Blowfish, Catfish, Cichlids (South America), Clawed frogs, Clawed shrimps, Corals, Crayfish, Crustaceans, Danions, Discus, Dwarf crayfish, Dwarf shrimps, Flowerhorn, Gill maggots, Gobies, Goldfish, Gouramis, Guppy, Juvenile fish, Killifish, Livebearers, Loaches, Mussels, Newts, Panchaxes, Rainbowfish, Snails, Spiny eels, Terrapins, Tetra, Tropical terrapins, Veiltails, blood parrot cichlids, freshwater butterflyfish, turtle
Animal size	For all animal sizes	For all animal sizes
Animal age group	All aquarium fish	All aquarium fish
Volume of habitat	> 300 L	800 L
Material	plastic (ABS)	plastic (ABS)
Food type	-	-
Colour	grey / blue	grey / blue
Dosage	-	-
Transport conditions	-	-





JBL CRISTALPROFI COMBIFILTER Basket II

Electronic label / illuminant		
Product name	JBL CP COMBIFILTER Basket II e4/7/901,2	JBL CP COMBIFILTER Basket II e15/1901,2
Art. No.	6029300	6029400
Ambient temperature	-	-
Start time	-	-
Mercury	-	-
Tube length	-	-
Service life	-	-
Lumen	-	-
CRI value	-	-
Dimmable	-	-
Switching cycles	-	-
PAR value	-	-
Energy efficiency class	-	-
UV-A	-	-
UV-B	-	-
UV-C	-	-
Colour temperature	-	-
Base designation	-	-

Technical data		
Product name	JBL CP COMBIFILTER Basket II e4/7/901,2	JBL CP COMBIFILTER Basket II e15/1901,2
Art. No.	6029300	6029400
Range in litres	-	-
Range from - to	-	-
Range in days	-	-
Range tank length	-	-
Output in watts	-	-
Output per hour	-	-
Output per day	-	-
Height	-	87 mm
Length	-	218 mm
Width	-	184 mm
Diameter	-	-
Voltage	-	-
For	-	-
T8 26mm (watt)	-	-
T5 16mm (watt)	-	-
Size	-	-
Content for	-	-
Filter container volume	-	-
Volume filter media	-	-
Hose connections pressure/out	-	-





Technical data		
Hose connections suction/in	-	-
Delivery head	-	-





JBL CRISTALPROFI COMBIFILTER Basket II

Food type	-
Sub product type	-
Dosing	-





Additional information for the specialist trade sector

Article data		
Product name	JBL CP COMBIFILTER Basket II e4/7/901,2	JBL CP COMBIFILTER Basket II e15/1901,2
Art. No.	6029300	6029400
VAT	20%	20%
Sales unit (SU)	1	1
Volume packaging	2.8l	4.6l
Dimensions (l/w/h)	80 mm/200 mm/175 mm	105 mm/225 mm/195 mm
Layer	80	80
Pallet	320	240
Category of products	3	3
Customs tariff	84219990	84219990
Country of origin	CN	CN
Type of packaging	Faltschachtel/Karton	Faltschachtel/Karton

PU 1 data		
Product name	JBL CP COMBIFILTER Basket II e4/7/901,2	JBL CP COMBIFILTER Basket II e15/1901,2
Art. No.	6029300	6029400
PU 1 material	cardboard gr	cardboard gr
PU 1 weight	650 g	720 g
PU 1 length	400 mm	400 mm
PU 1 width/depth	420 mm	420 mm
PU 1 height	340 mm	370 mm

PU 2 data		
Product name	JBL CP COMBIFILTER Basket II e4/7/901,2	JBL CP COMBIFILTER Basket II e15/1901,2
Art. No.	6029300	6029400
PU 2 material	None	None
PU 2 weight	-	-
PU 2 length	-	-
PU 2 width/depth	-	-
PU 2 height	340 mm	370 mm

Trade data		
Product name	JBL CP COMBIFILTER Basket II e4/7/901,2	JBL CP COMBIFILTER Basket II e15/1901,2
Art. No.	6029300	6029400
Till receipt text	CombiBasket	CombiBasket
Shelf placement	-	-

